

WORLD FUTURE FUND

**A RESEARCH INSTITUTE FOR THE STUDY
OF GLOBAL FUTURE TRENDS**

BOX 1829, OLD TOWN, ALEXANDRIA, VA. 22313

PHONE 703-329-3006 E MAIL wwf@aol.com

INTERNET <http://www.worldfuturefund.org>

PORTRAIT OF OUR WORLD

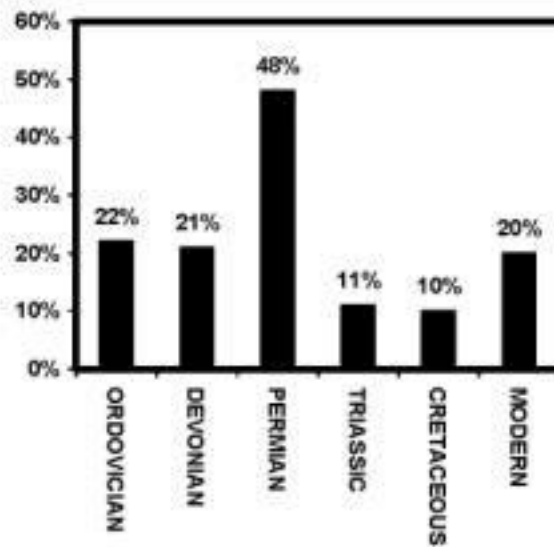
**A COLLECTION OF CHARTS AND PICTURES
ABOUT THE DESTRUCTION OF OUR PLANET
BY TODAY'S WORLD ORDER**



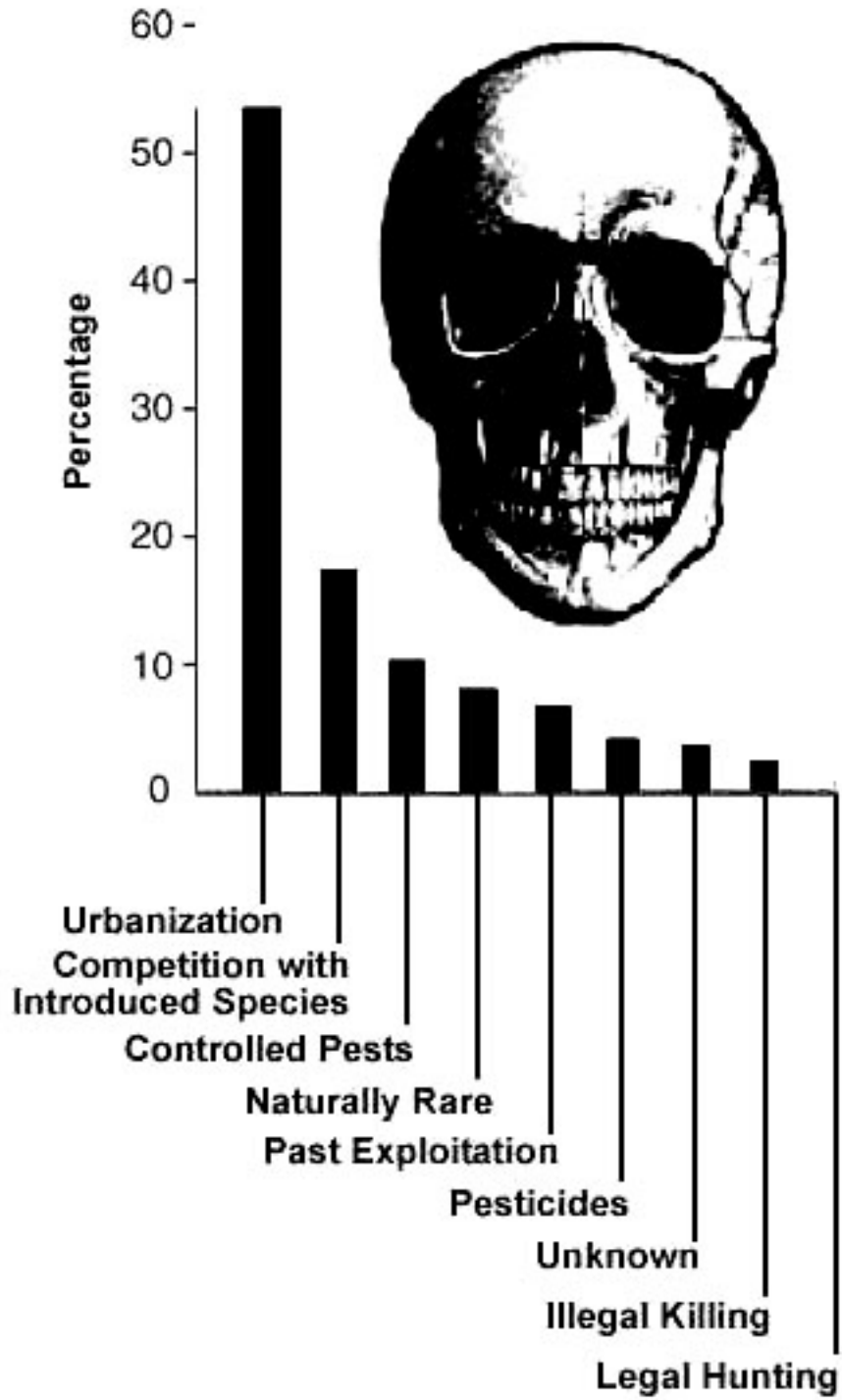
THE GREATEST MASS MURDER IN 250 MILLION YEARS

THE SIX GREAT ERAS OF EXTINCTIONS

THE MODERN AGE HAS PRODUCED THE GREATEST
DESTRUCTION OF OTHER FORMS OF LIFE THAT THE
WORLD HAS SEEN IN 250 MILLION YEARS



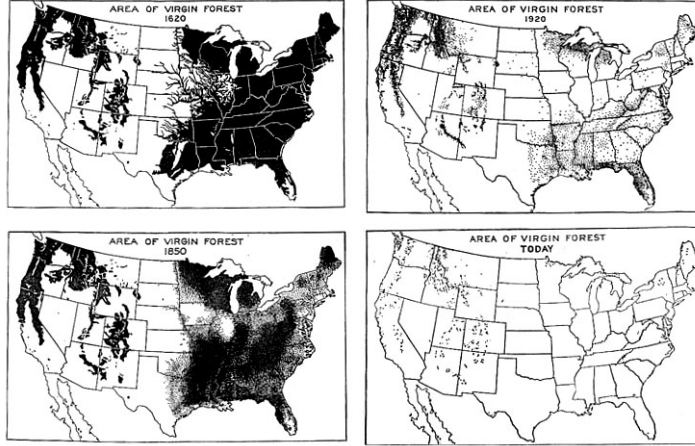
HOW ARE HUMANS EXTERMINATING OTHER FORMS OF LIFE



**DESTROYING THE LUNGS OF THE
PLANET, BURNING THE RAIN FORESTS
FOR FINANCIAL PROFIT**



THE DESTRUCTION OF AMERICA'S ORIGINAL FORESTS



THE WORLD'S ORIGINAL FORESTS



©WWW.WORLDFUTUREFUND.ORG

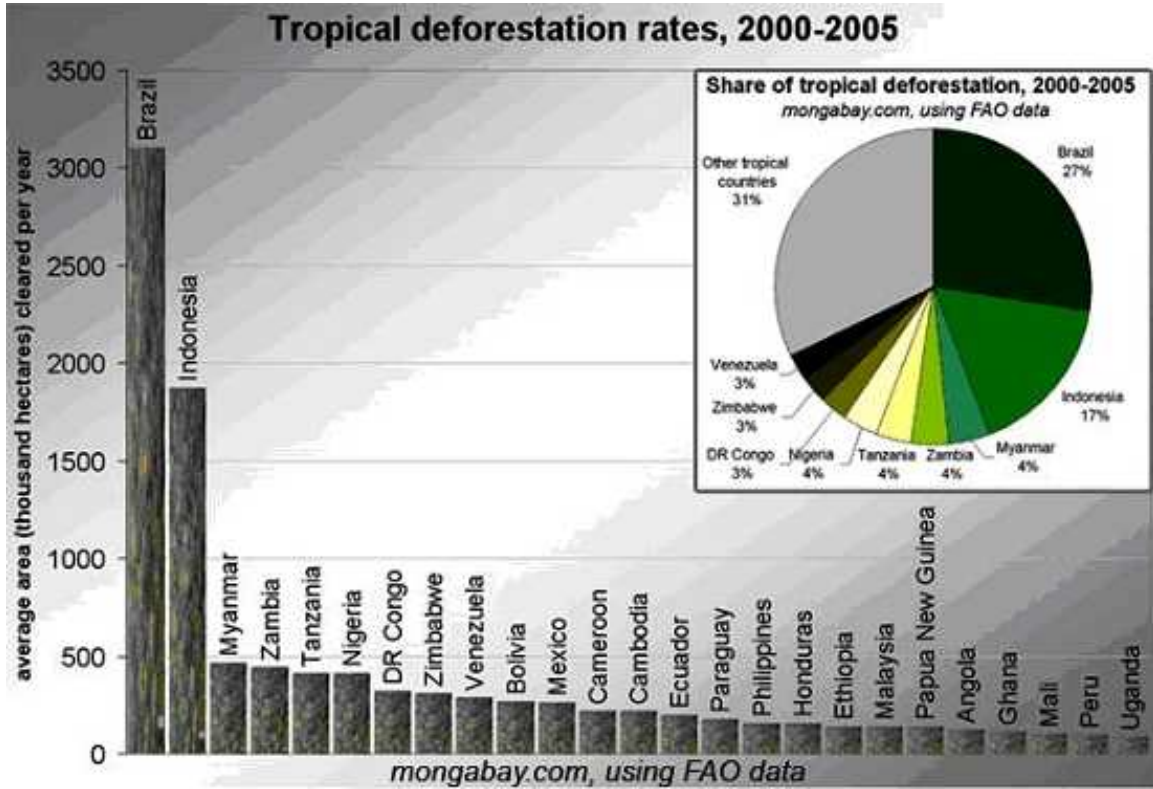
WHAT'S LEFT TODAY.

LIGHT GREEN IS NEW GROWTH



©WWW.WORLDFUTUREFUND.ORG

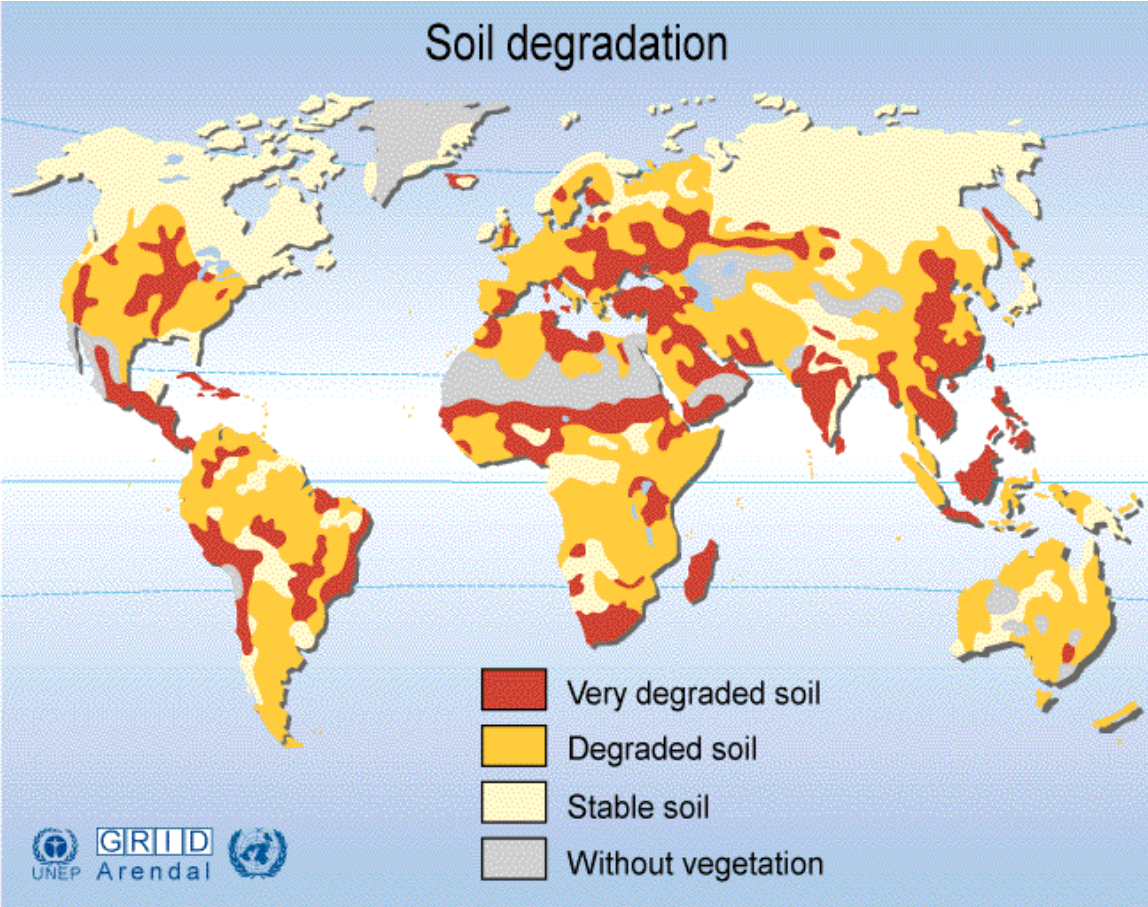
WHO IS DESTROYING THE RAIN FORESTS



**THEY TELL US IT'S SAFE.
SHOULD WE BELIEVE THEM?**

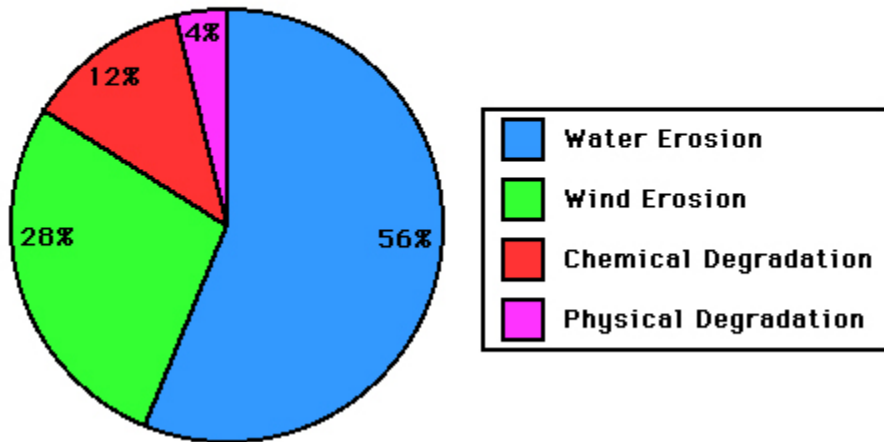


DAMAGING THE WORLD'S PRECIOUS SOIL



HOW HUMANS ARE DAMAGING THE WORLD'S SOIL

World-Wide Soil Degradation
Mechanisms for all Land-Use Types

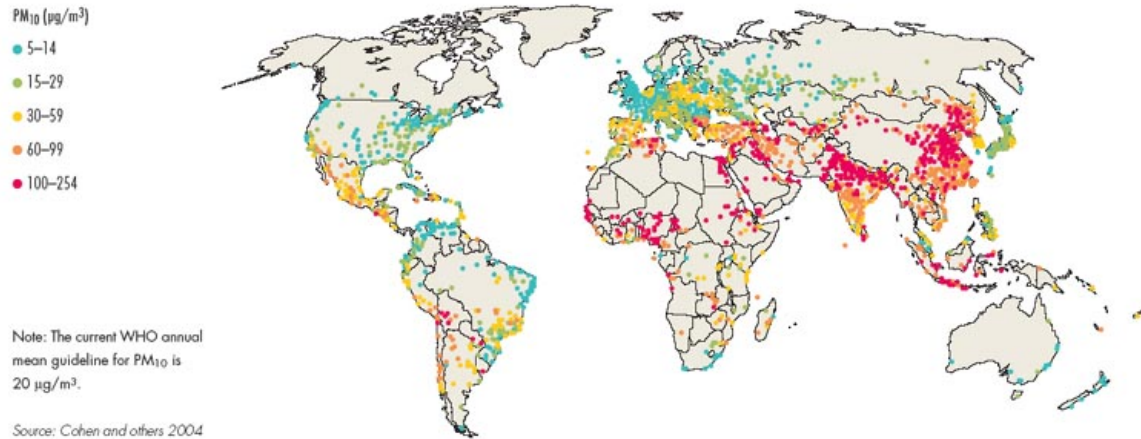


DESERTS ARE GROWING

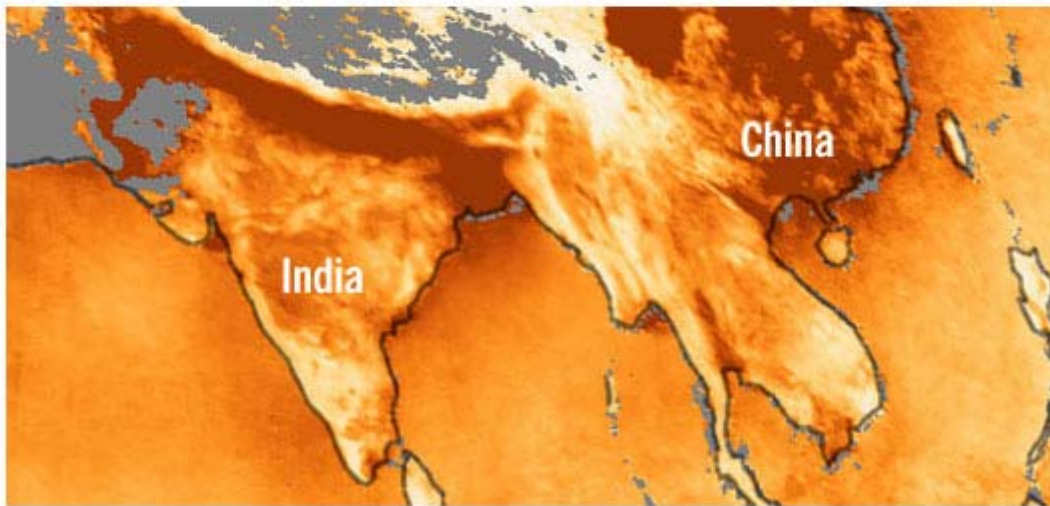
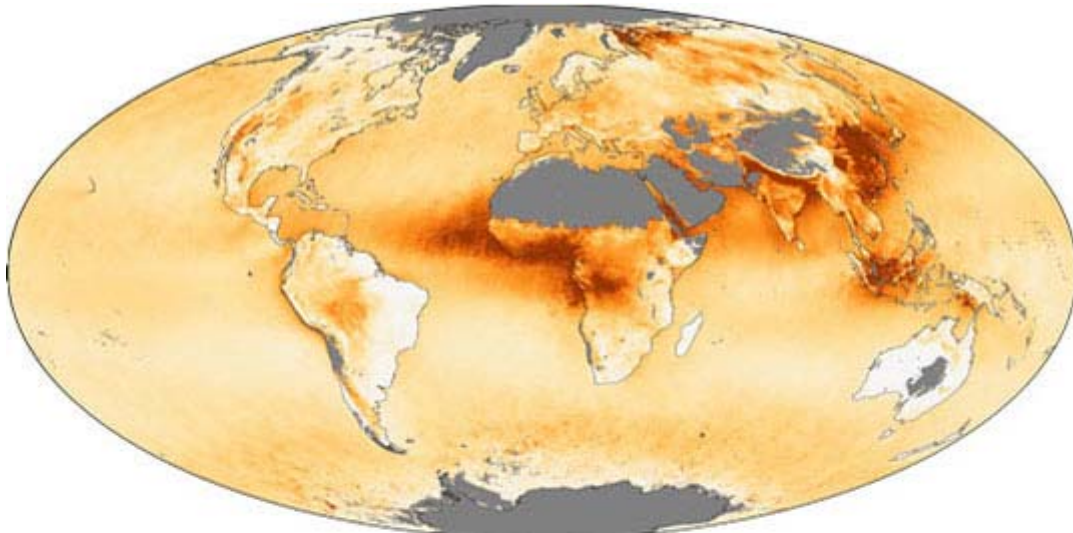


POISON IN THE AIR

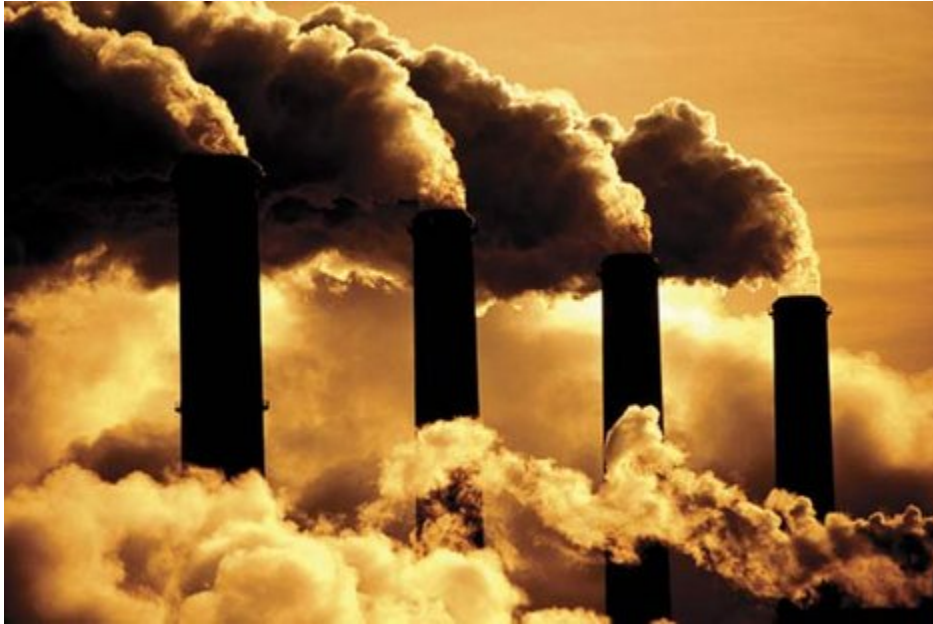
Figure 2.10 Estimated annual average concentrations of PM₁₀ in cities with populations greater than 100 000, and in national capitals, for 1999



AIR POLLUTION AROUND THE WORLD



**POISONING THE AIR OF
THE PLANET**

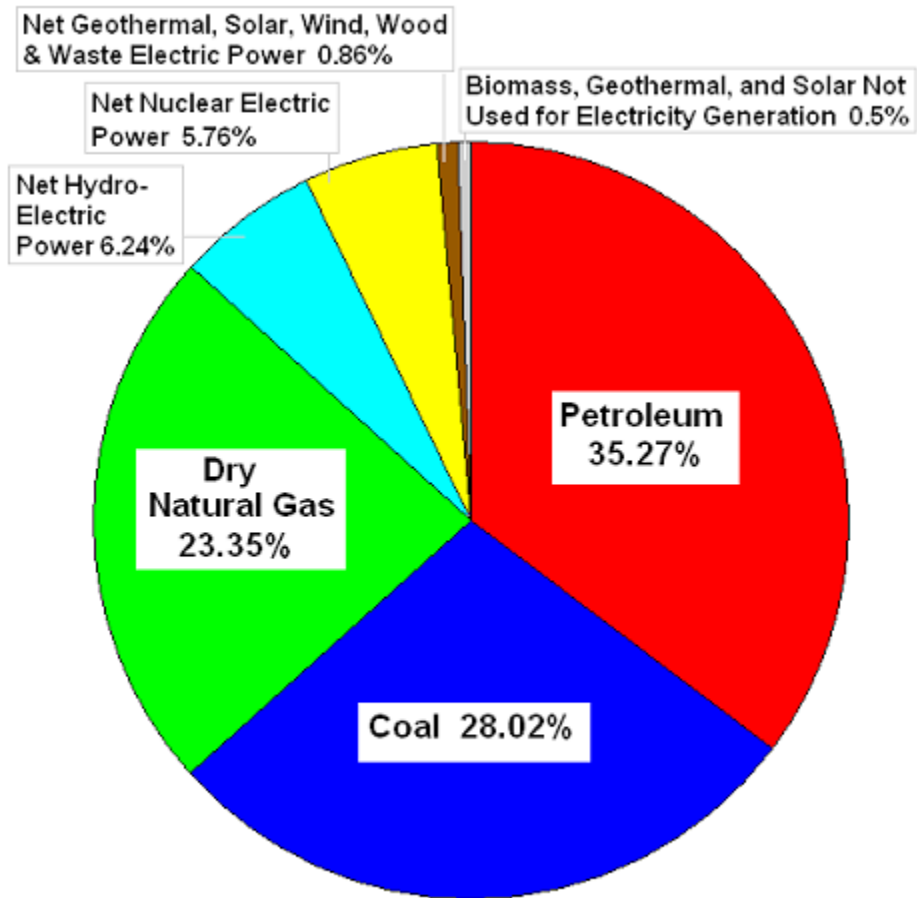


AIR POLLUTION OVER INDIA



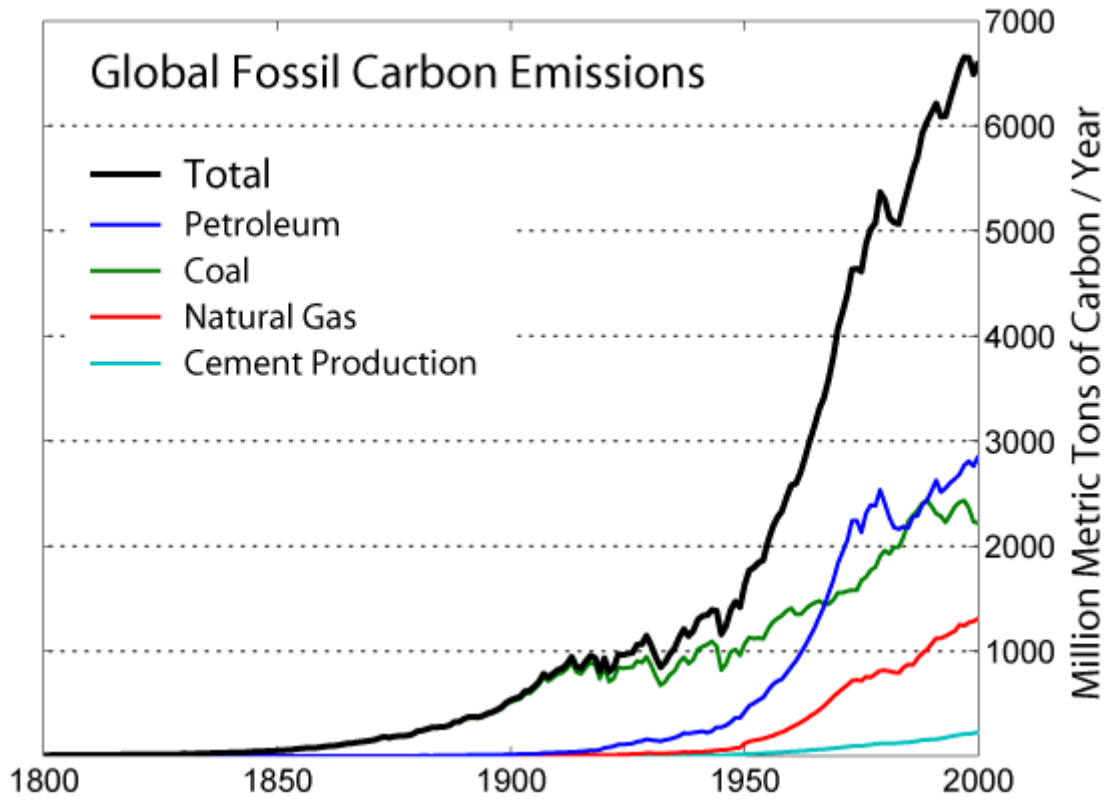
SAFE, RENEWABLE ENERGY.

LESS THAN 1% OF THE TOTAL.



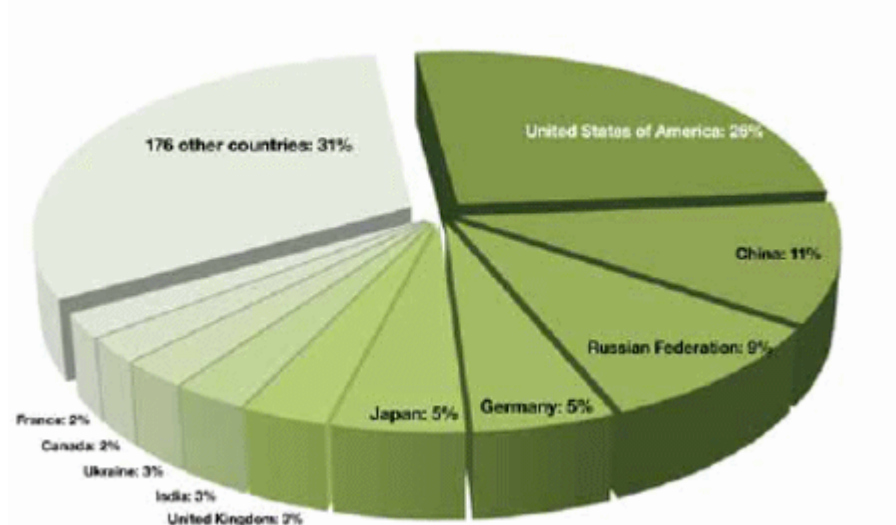
World Consumption 2006

GLOBAL CARBON EMISSIONS FROM THE ENERGY SECTOR.

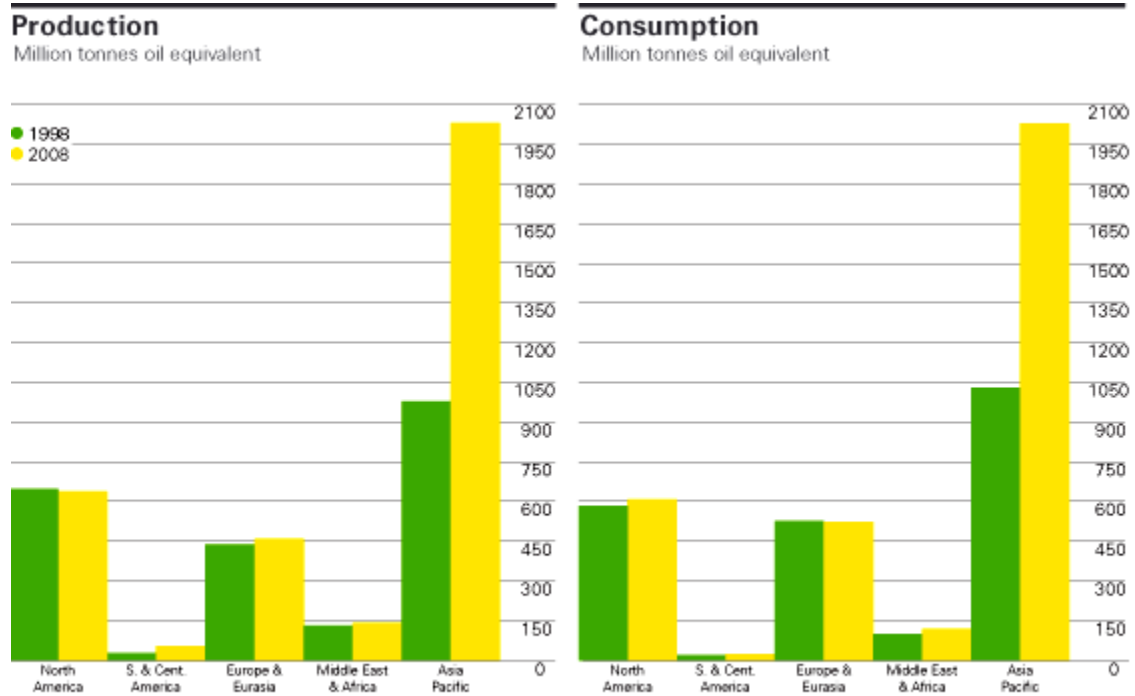


WHO HAS PUT THE CARBON IN THE ATMOSPHERE?

Figure 2 Cumulative CO2 emissions, 1960-2005 % of World Total

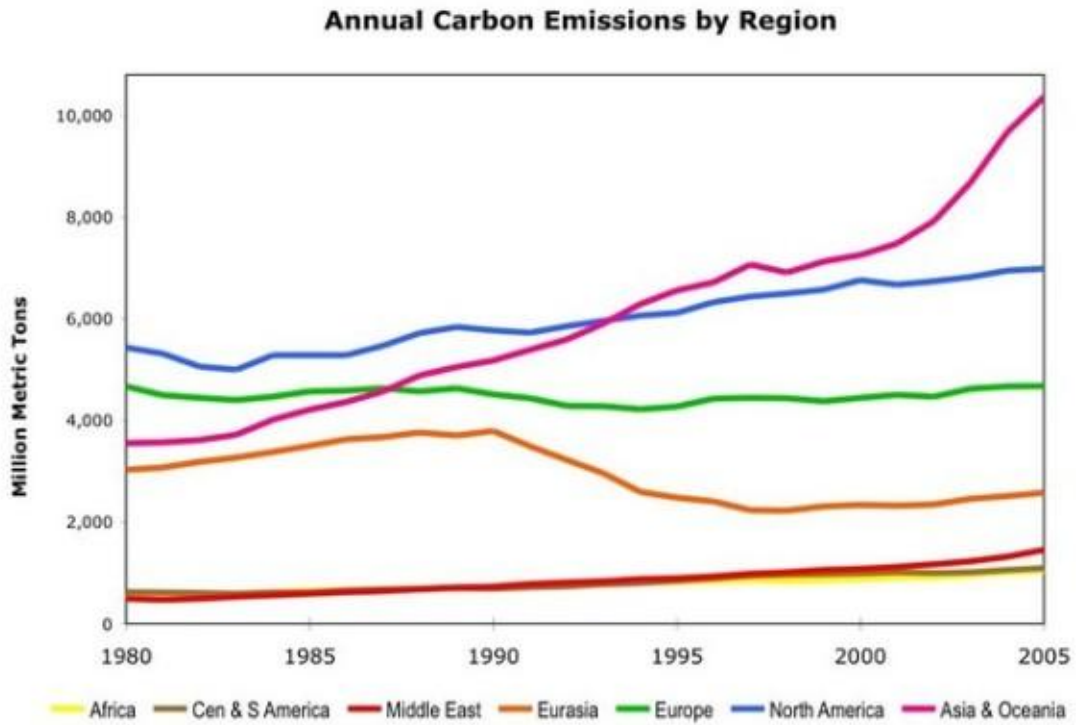


CHINA'S GROWTH IS BASED ON COAL

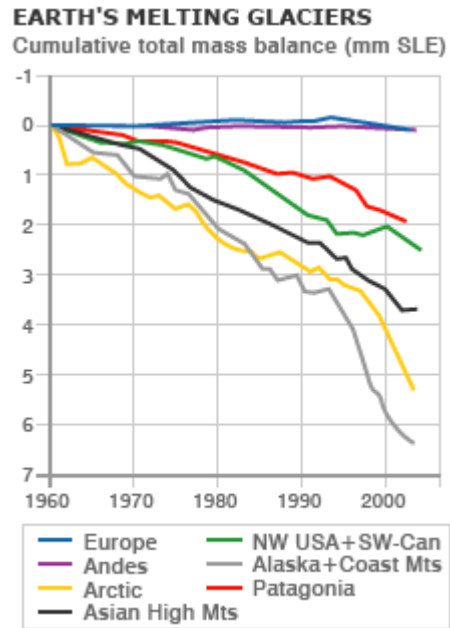


World coal consumption grew by 3.1% in 2008, the first below-average increase since 2002. Coal nonetheless remained the fastest-growing primary energy source for the sixth consecutive year. China accounted for more than 85% of global growth even though Chinese consumption growth was below average.

ASIA'S GROWTH HAS BEEN BASED ON CARBON EMISSIONS.

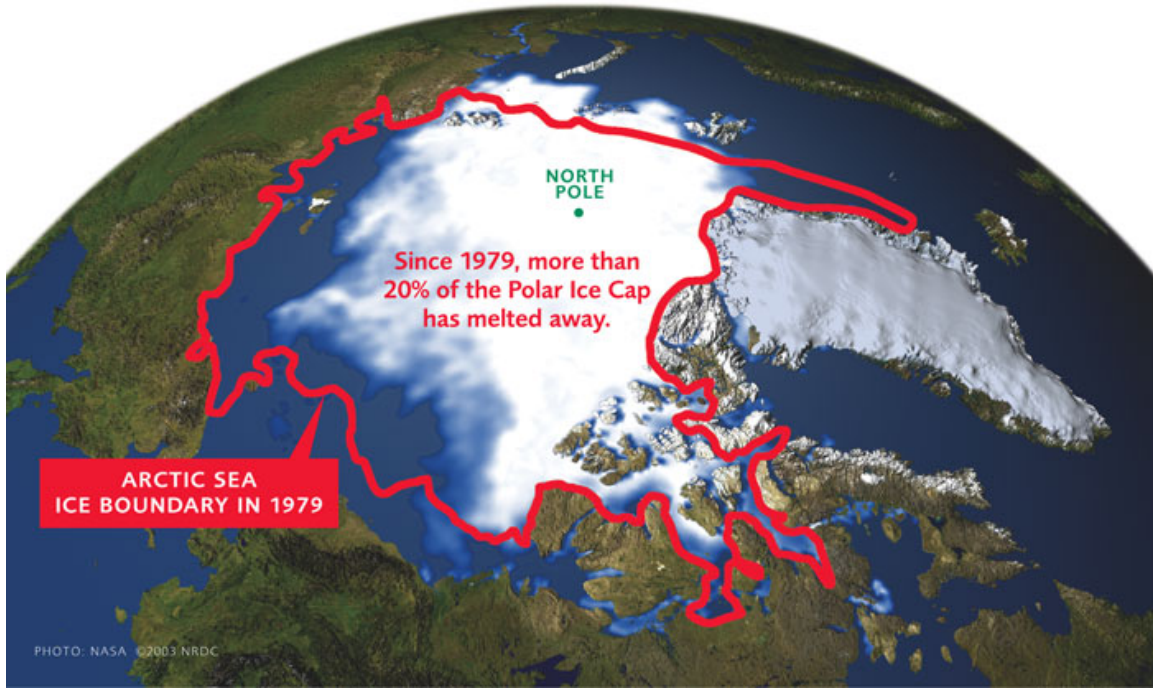


THE WORLD'S GLACIERS ARE MELTING



SOURCE: IPCC

ARCTIC ICE IS RECEDING



**THE RETREAT OF THE GLACIERS:
THIS PICTURE TELLS THE STORY**

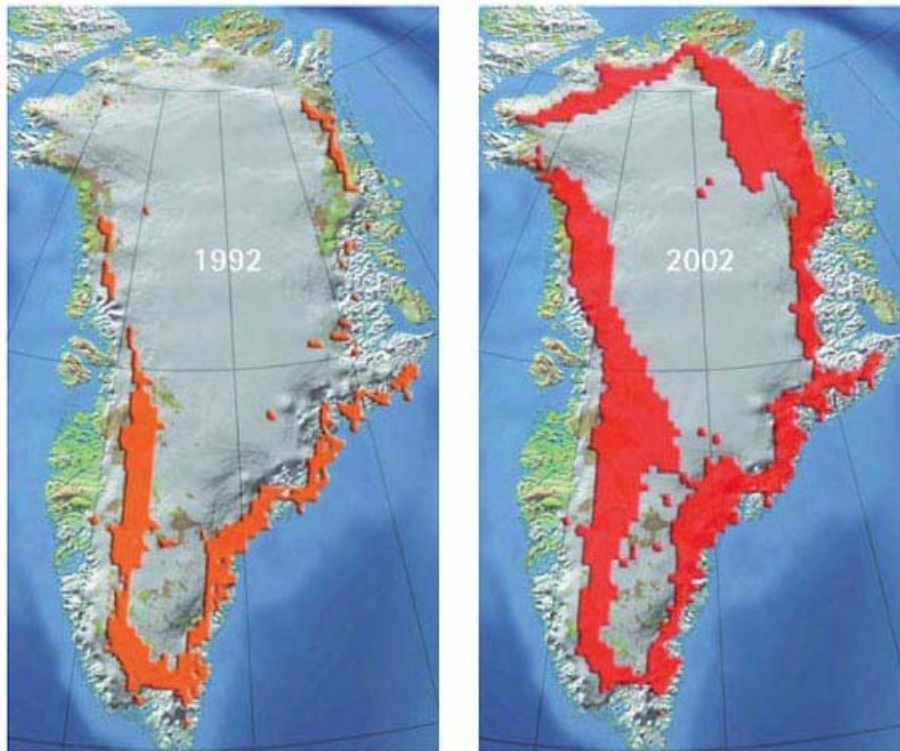


Athabasca Glacier, Jasper National Park, Canada in 1917 and 2005. Wheeler Survey photo (above) © 2005 Gary Braasch



GREENLAND'S GLACIERS ARE MELTING AT A RAPID RATE

Figure 2.20 Seasonal melting of the Greenland Ice Sheet



Note: The areas in orange/red are the areas where there is seasonal melting at the surface of the ice sheet.

Source: Steffen and Huff 2005

ON THE GROUND IN GREENLAND

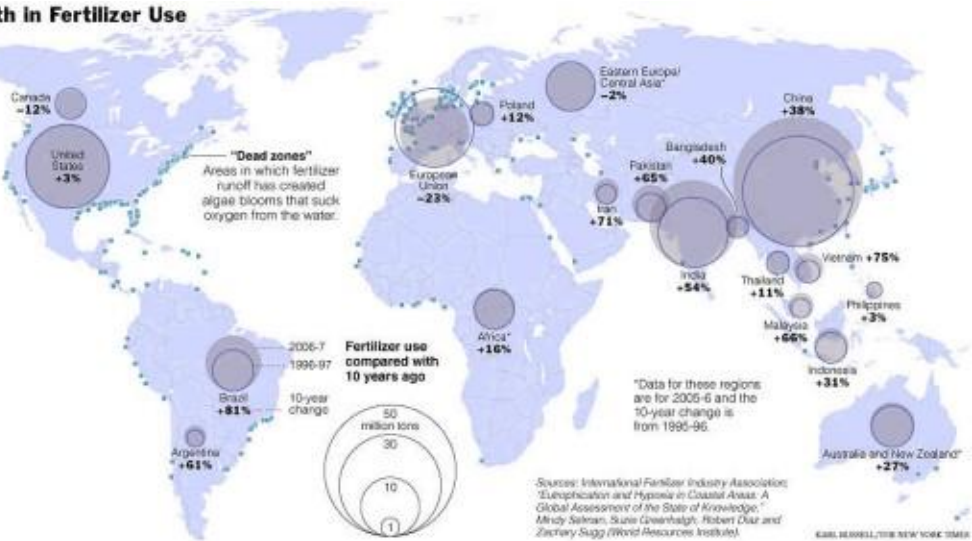


SOARING FERTILIZER USE.

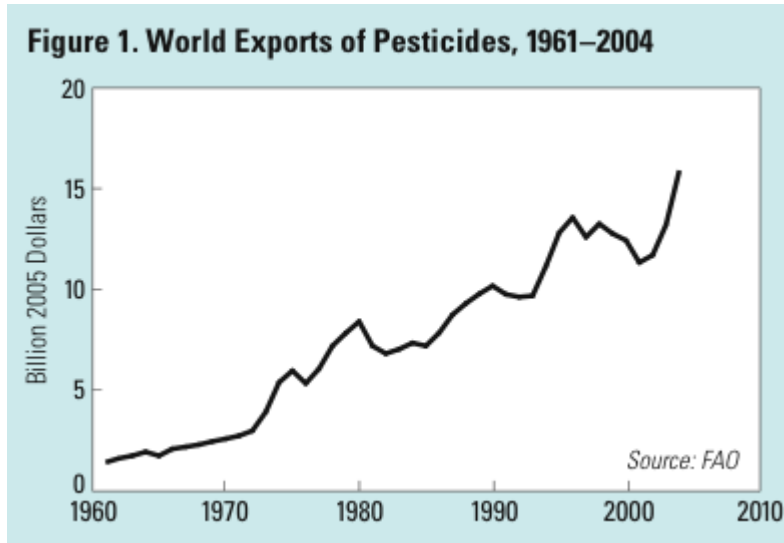
POISONING THE WORLD'S WATER.

Worldwide Growth in Fertilizer Use

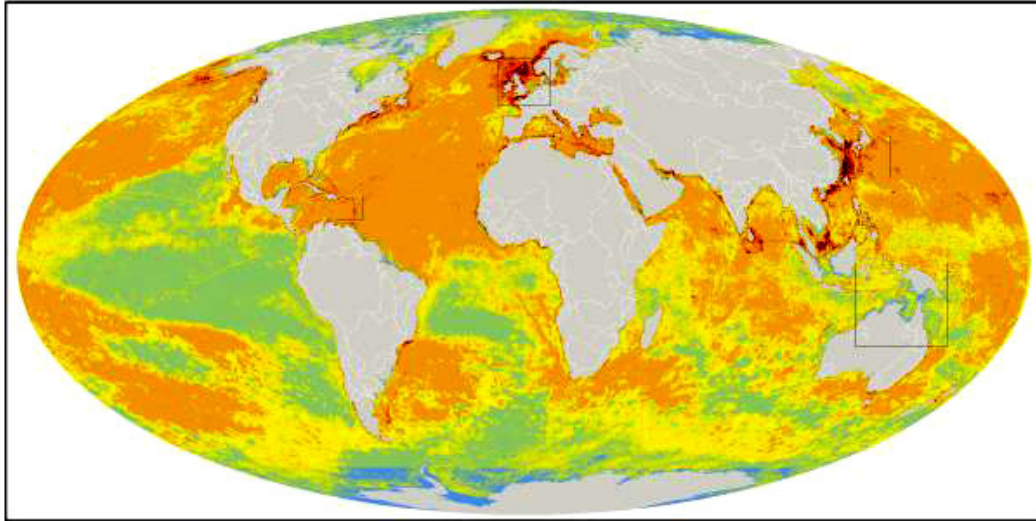
Fertilizer use has been growing faster in developing countries than in the industrialized world in recent years. But rising demand has produced a big price jump. Increased fertilizer runoff is expected to worsen the problem of dead zones along ocean shores.



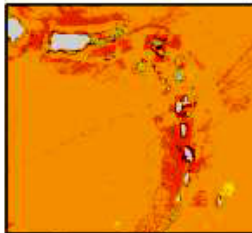
**SOARING TRADE IN POISON.
PESTICIDE EXPORTS HIT RECORD.**



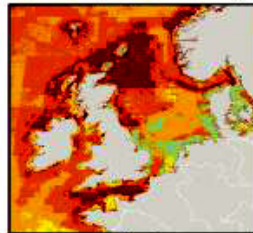
HUMAN DAMAGE TO THE OCEANS



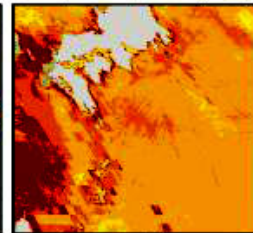
Very Low Impact (<1.4) Medium Impact (4.95–8.47) High Impact (12–15.52)
Low Impact (1.4–4.95) Medium High Impact (8.47–12) Very High Impact (>15.52)



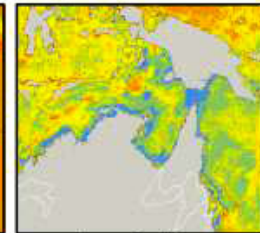
Eastern Caribbean



North Sea



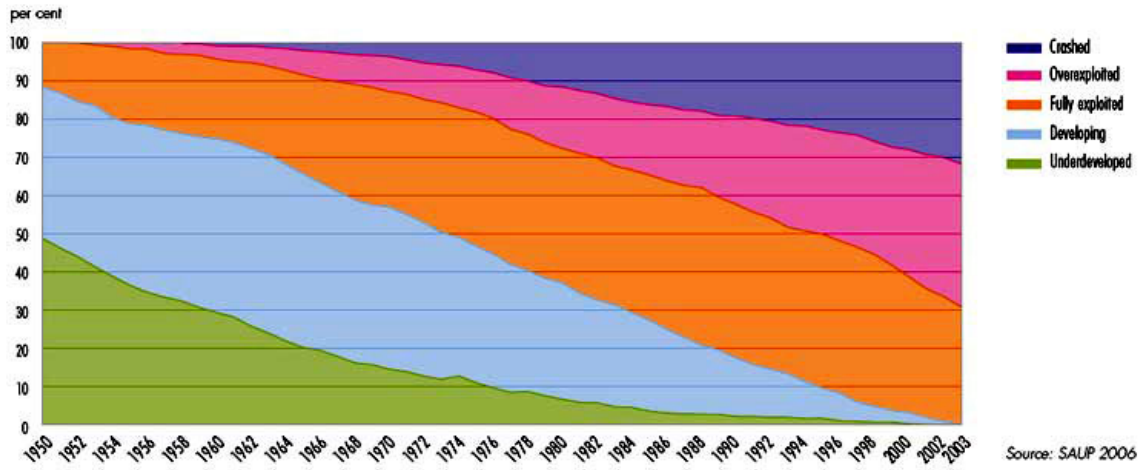
Japanese Waters



Torres Strait

DESTROYING THE WORLD'S FISHERIES

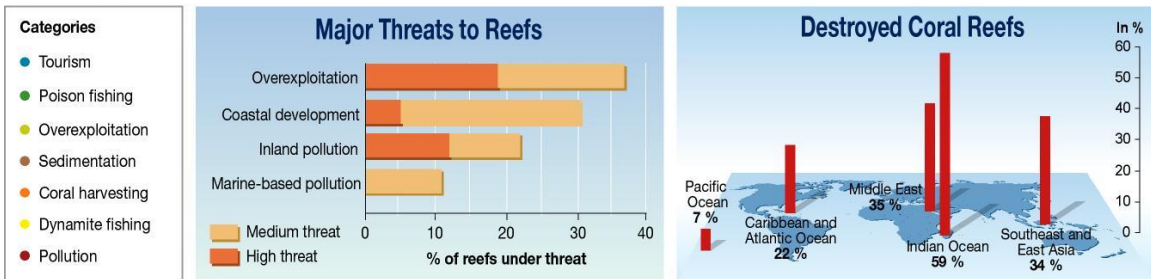
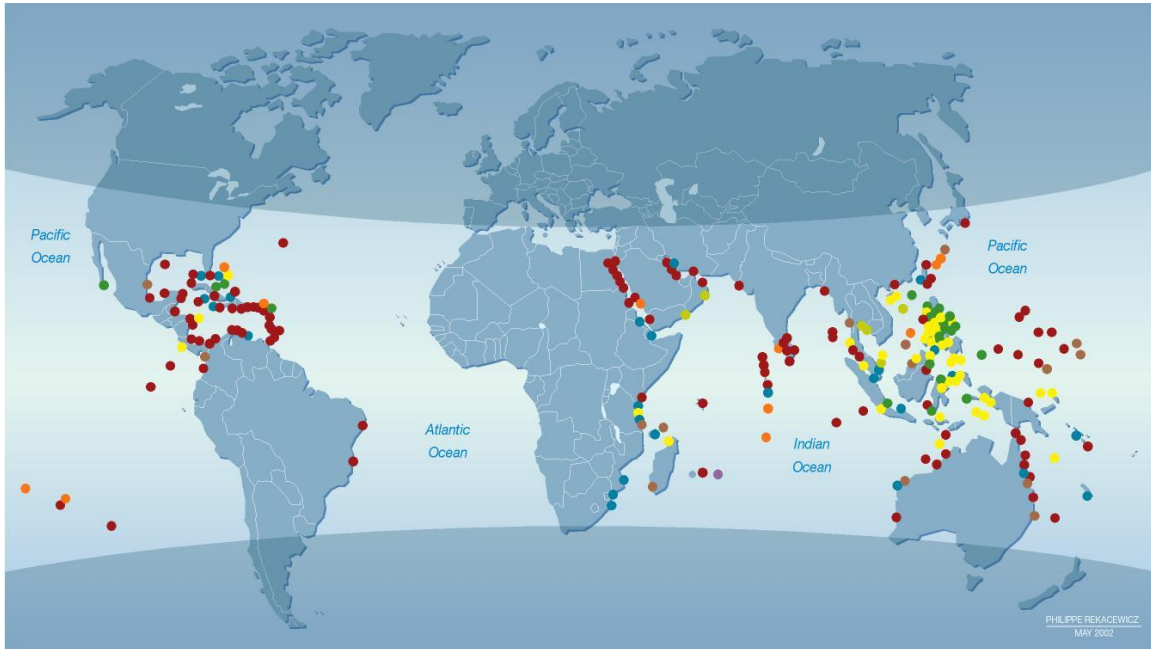
Figure 4.13 Exploitation status of marine fish stocks



**90% OF THE WORLD'S LARGE FISH
HAVE BEEN EXTERMINATED**

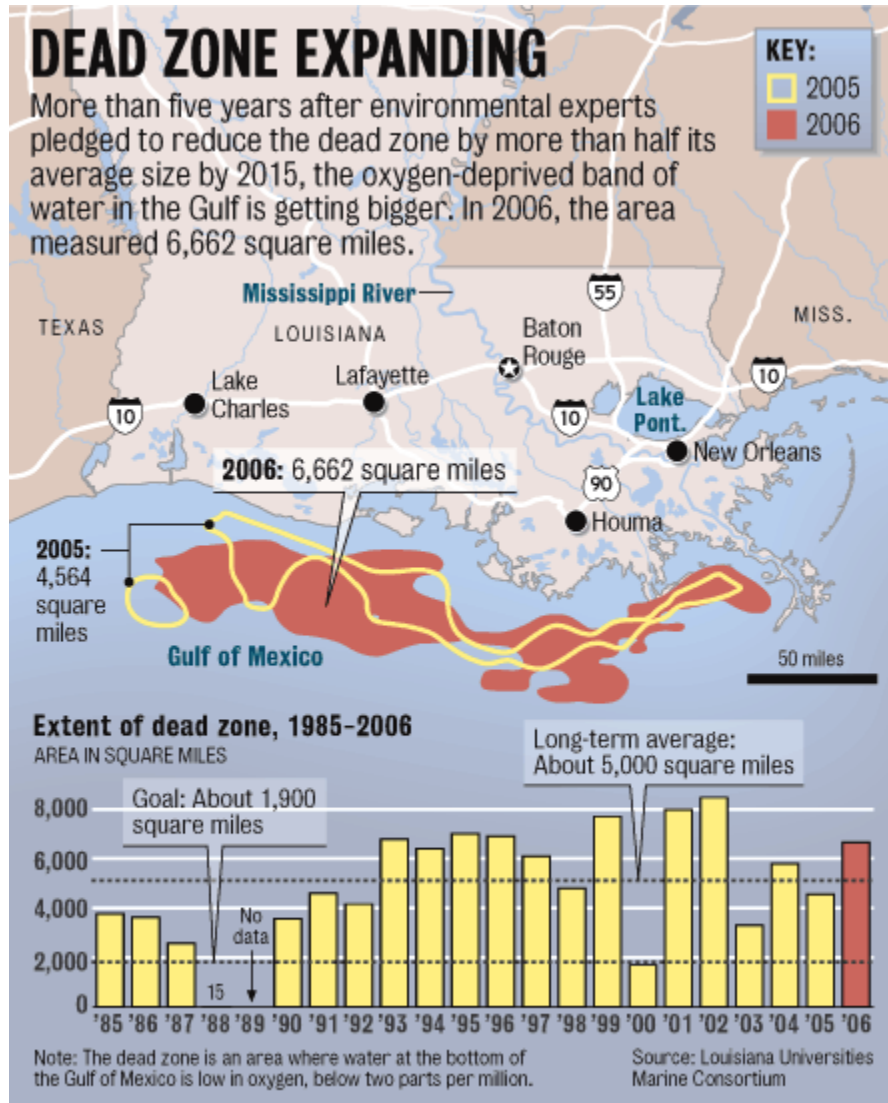


DESTROYING THE RAIN FORESTS OF THE OCEANS, THE WORLD'S CORAL REEFS



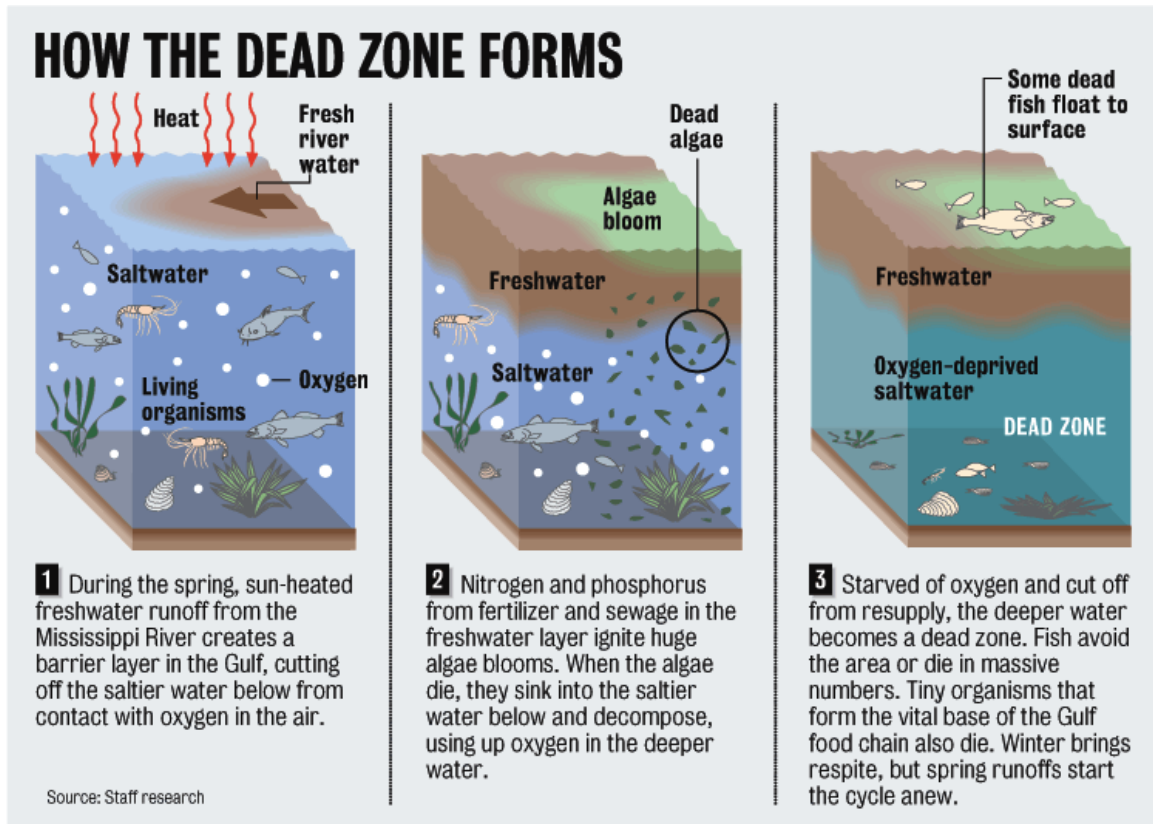
Source: Bryant et al., *Reefs at Risk; a Map-Based Indicator of Threats to the World's Coral Reefs*, World Resources Institute (WRI), Washington DC, 1998.

POISONING THE WORLD'S OCEANS: THE GROWTH OF DEAD ZONES



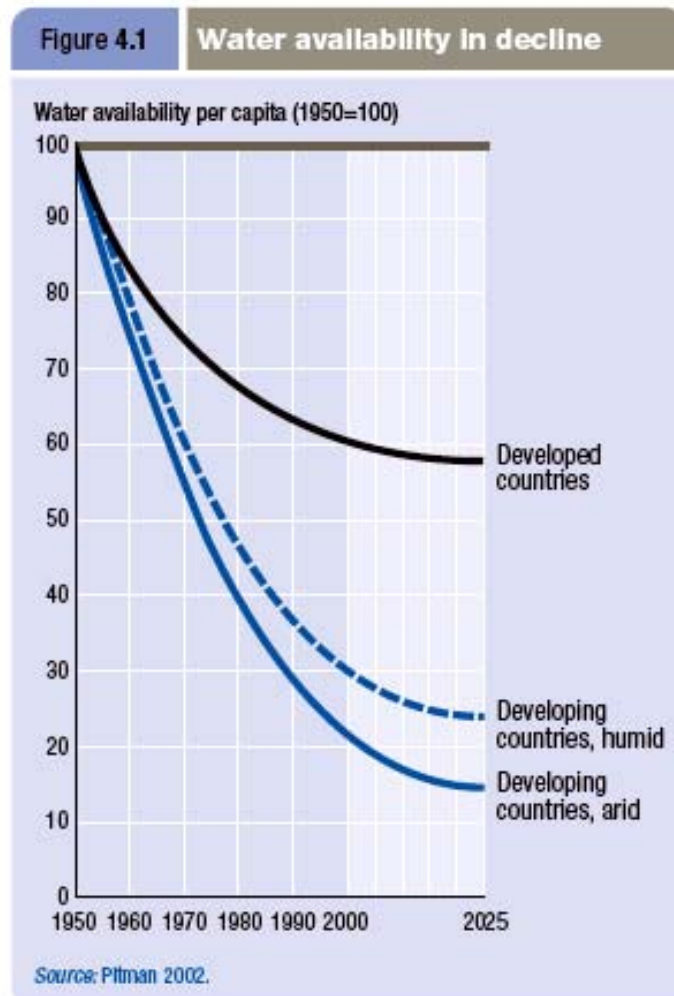
STAFF GRAPHIC BY DAN SWENSON

DESTROYING LIFE AT SEA. A CONSEQUENCE OF THE "GREEN REVOLUTION".

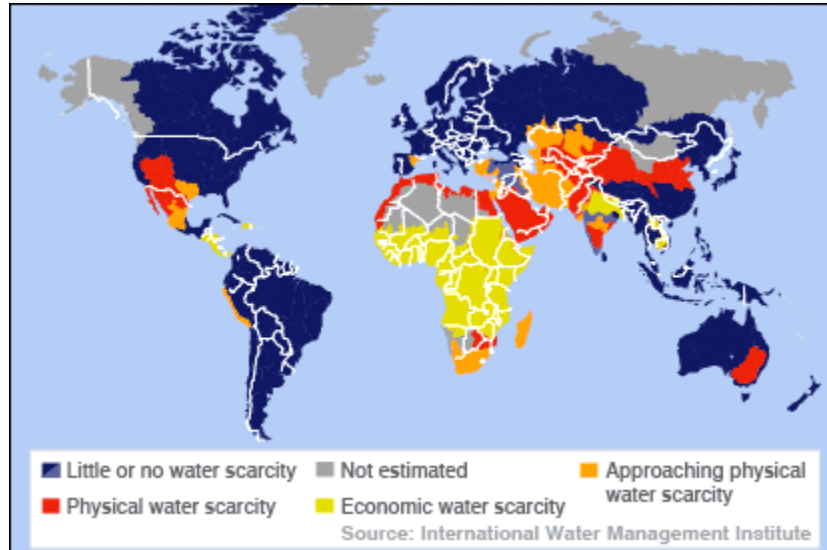


STAFF GRAPHIC BY DAN SWENSON

WATER LEVELS ARE DECLINING



WATER SHORTAGES ARE GROWING



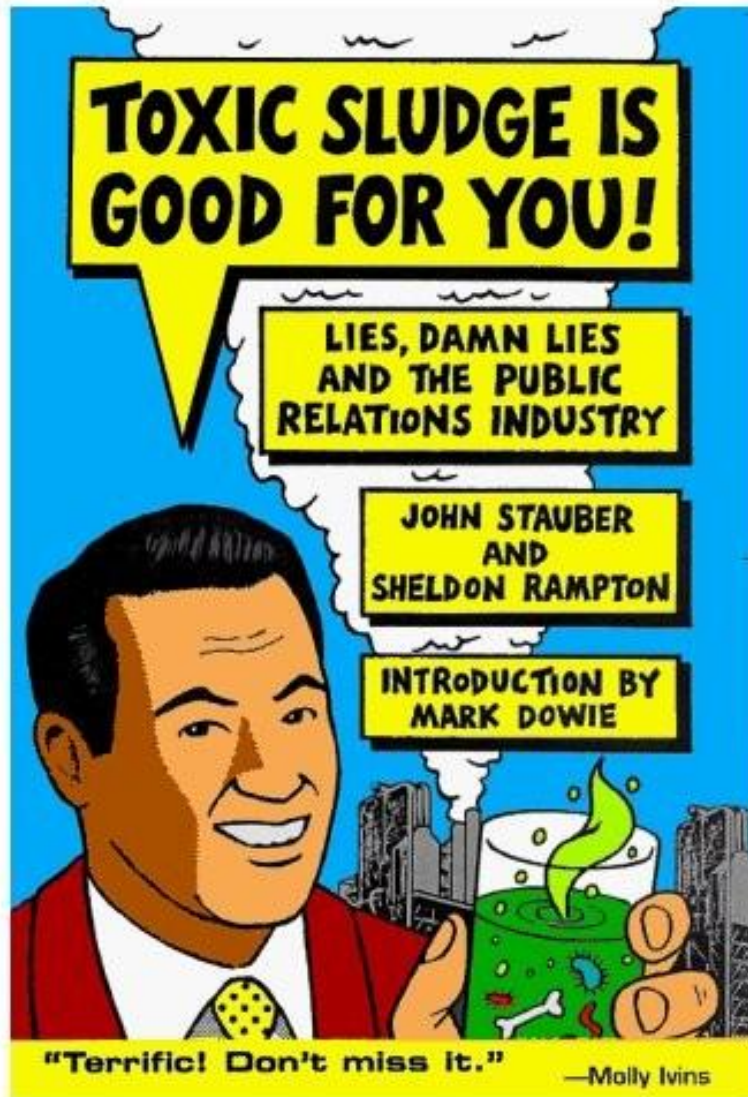
**90% of the Third World's sewage
is not treated.**



**It doesn't smell good or look pretty
but our leaders tell us it's part of progress.**



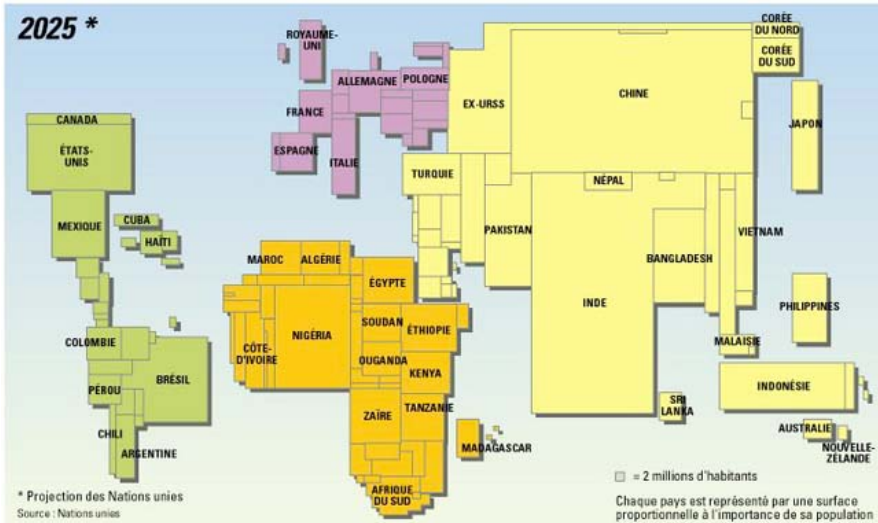
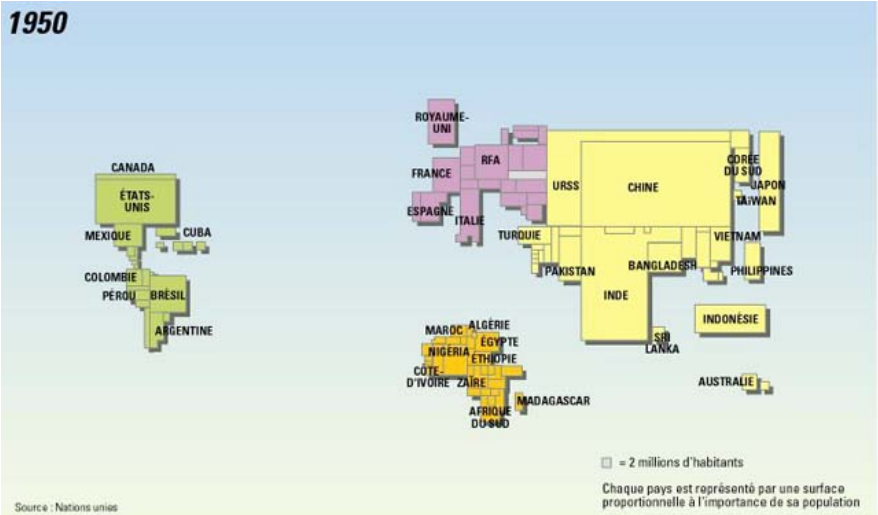
**OUR LEADERS ASSURE US THAT
THE POLLUTION IS "SAFE".**



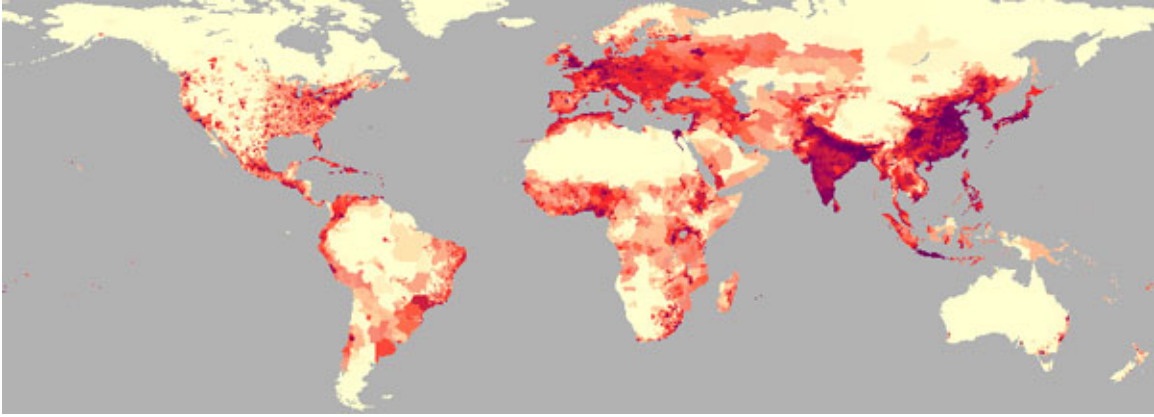
BUT IS IT REALLY SAFE?



WHERE THE PEOPLE ARE: NATIONS



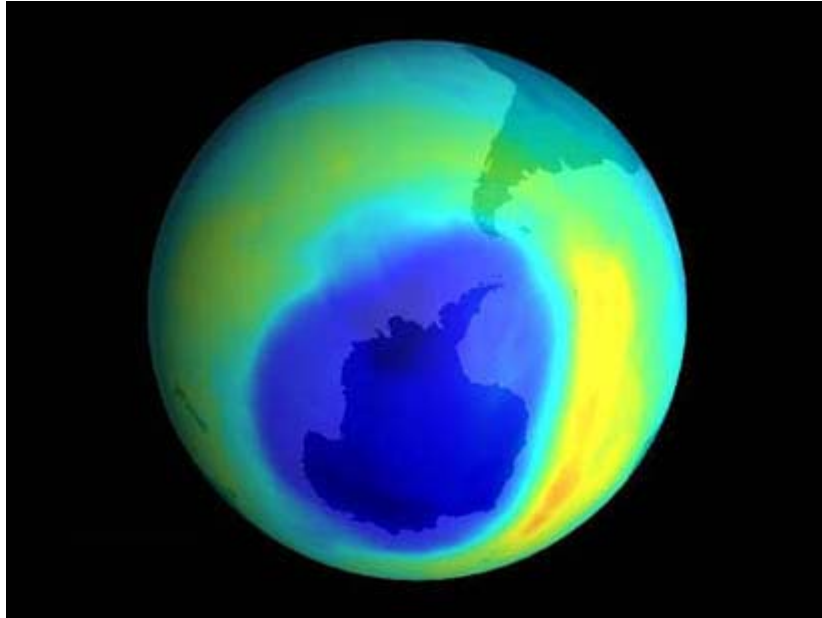
WHERE THE PEOPLE ARE



**Toxic chemicals are now even in
the blood of children.**



**POLLUTION HAS CREATED A HOLE
IN PLANET'S ATMOSPHERE**



**OUR POLITICAL LEADERS PROMISE
HOPE BUT THEIR EFFORTS ARE
WEIGHED IN THE BALANCE AND
FOUND WANTING.**



**OUR LEADERS ASSURED US THE
ECONOMY WAS ROCK SOLID AND
IN GREAT SHAPE.**



THEN THINGS COLLAPSED IN 2008.



**HUGE DEBTS HAVE BEEN USED
TO CREATE AN ILLUSION OF PROSPERITY:
DEBT AS A SHARE OF U.S. GNP
IS AT ITS HIGHEST LEVEL IN HISTORY**

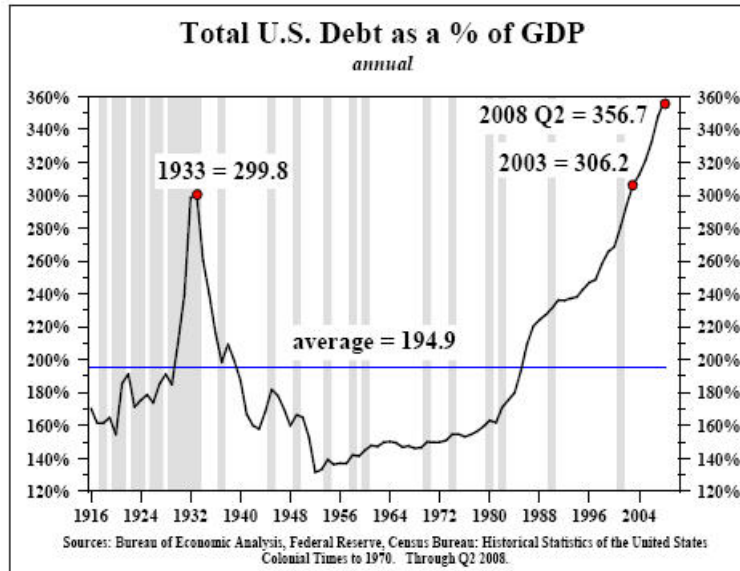
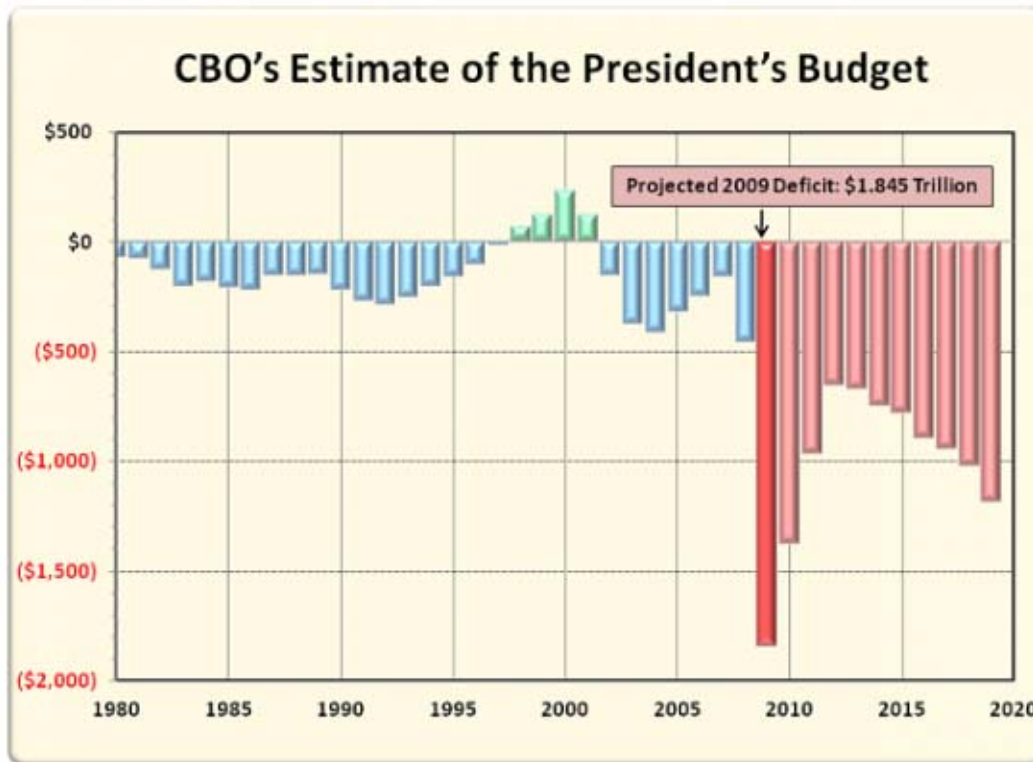


Chart 5

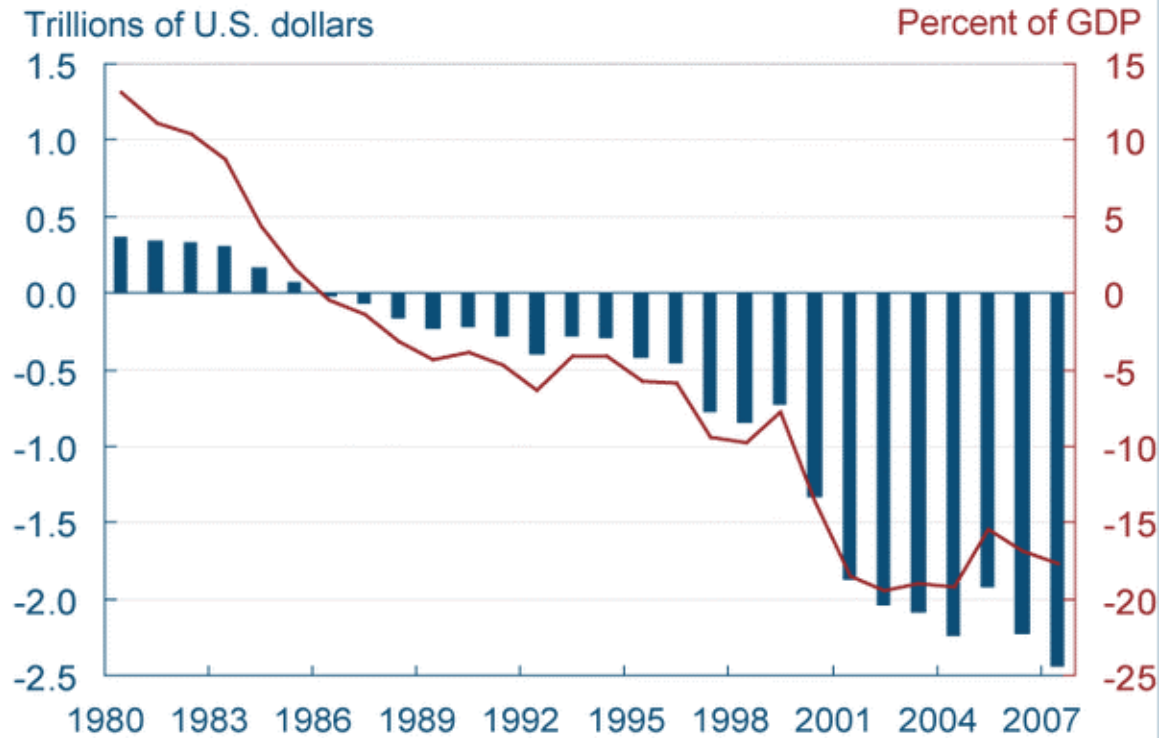
HUGE DEBTS ARE BEING USED TO COVER UP PROBLEMS.



Source: *A Preliminary Analysis of the President's Budget and an Update of CBO's Budget and Economic Outlook* March 2009

**AMERICA IS NOW ALMOST BANKRUPT.
TRILLIONS HAVE BEEN BORROWED BY
U.S. LEADERS FROM FOREIGN CREDITORS.**

Net International Investment Position



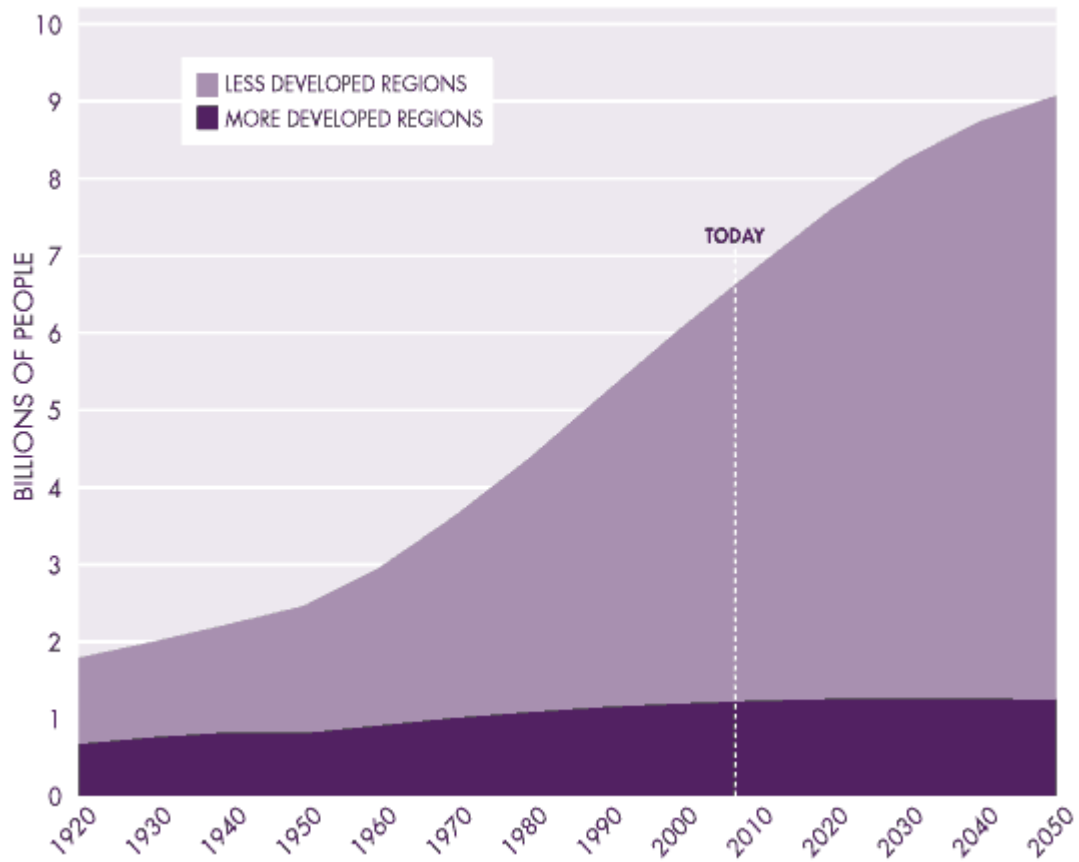
**OUR LEADERS PROMISE
OPPORTUNITY FOR ALL**



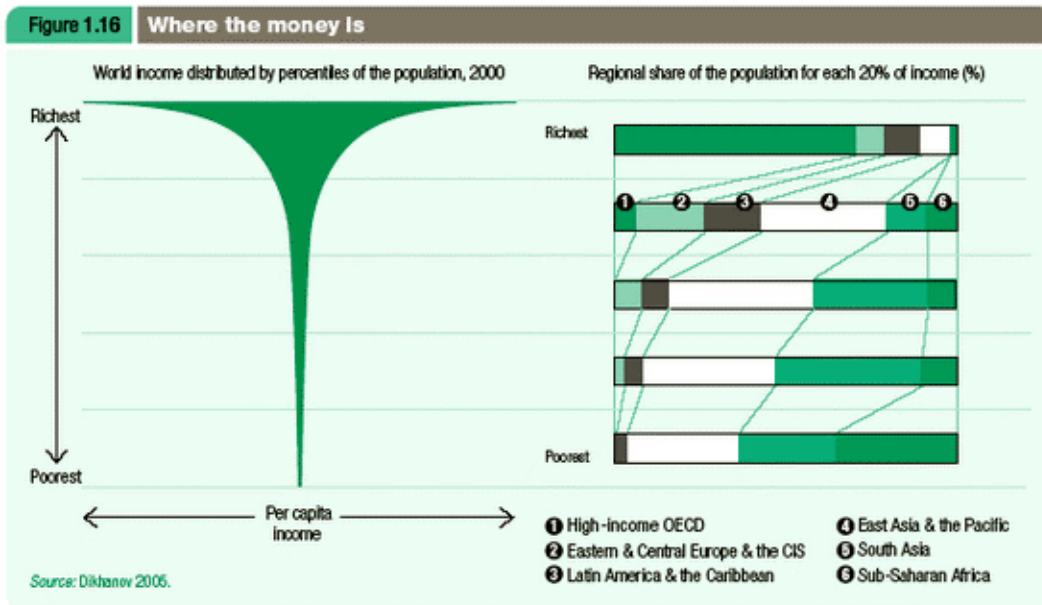
**BUT SLUMS ARE GROWING AROUND
THE WORLD, NOT DECLINING.**



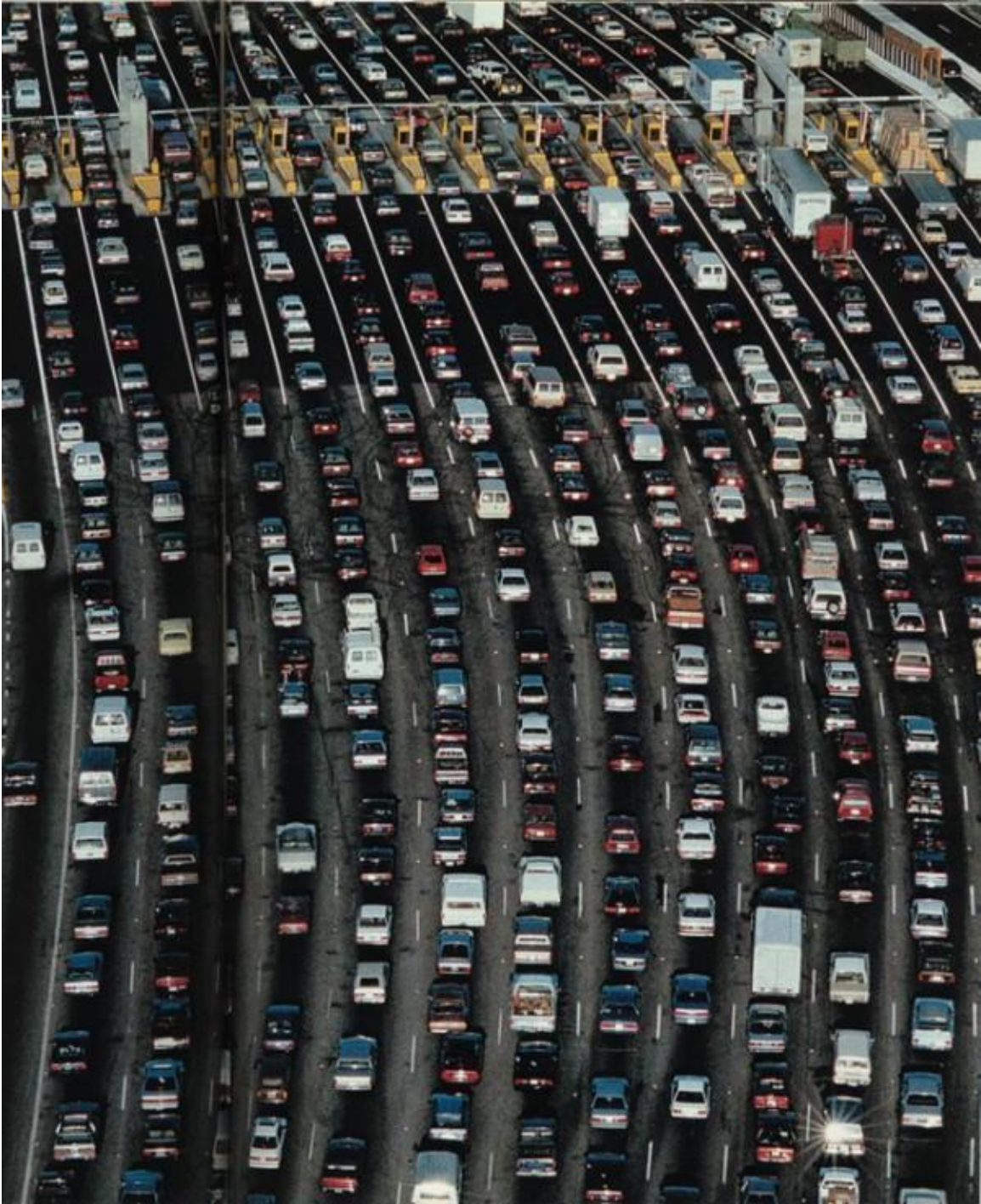
THE RANKS OF THE POOR ARE PROJECTED TO SOAR IN COMING YEARS



OUR LEADERS CLAIM THEIR RULE BENEFITS ALL BUT 20% OF THE PEOPLE HAVE ALMOST ALL THE WORLD'S MONEY.



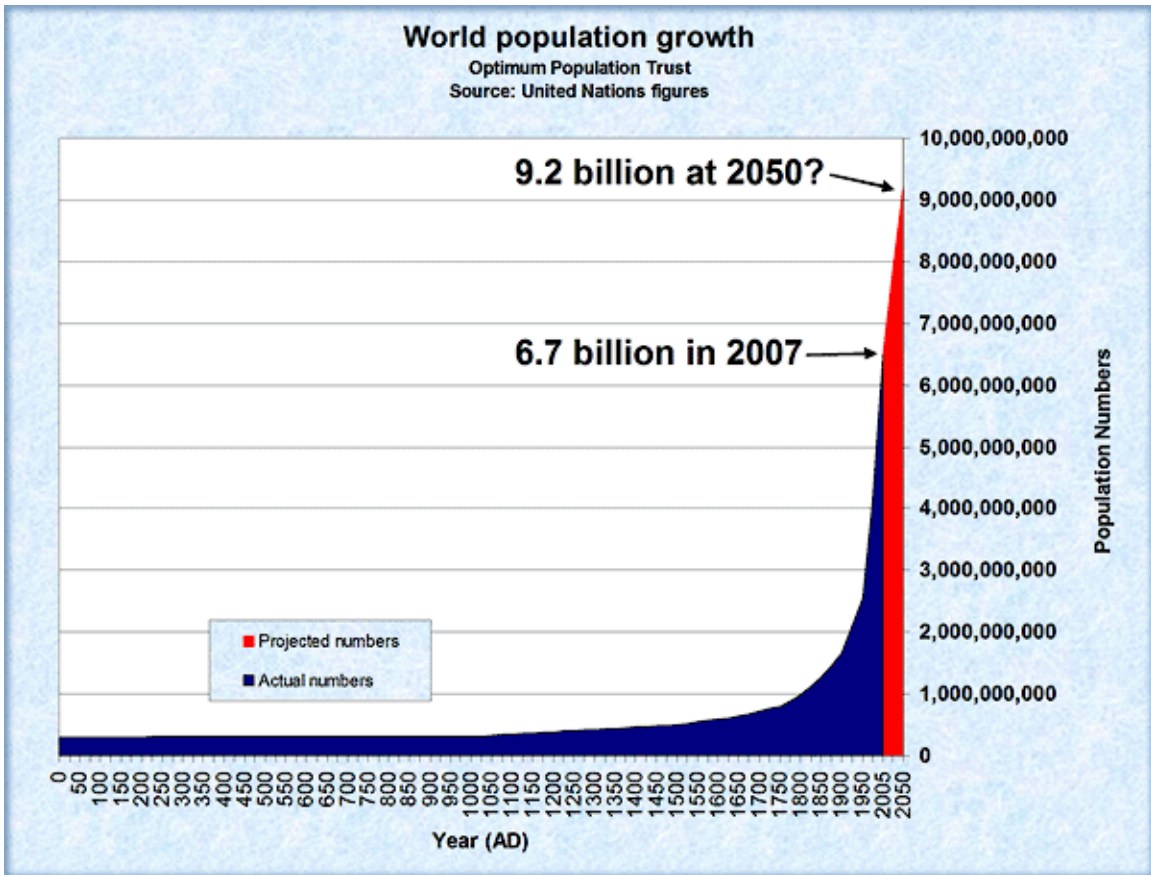
**WILL MORE CARS REALLY LEAD
TO MORE HAPPINESS?**



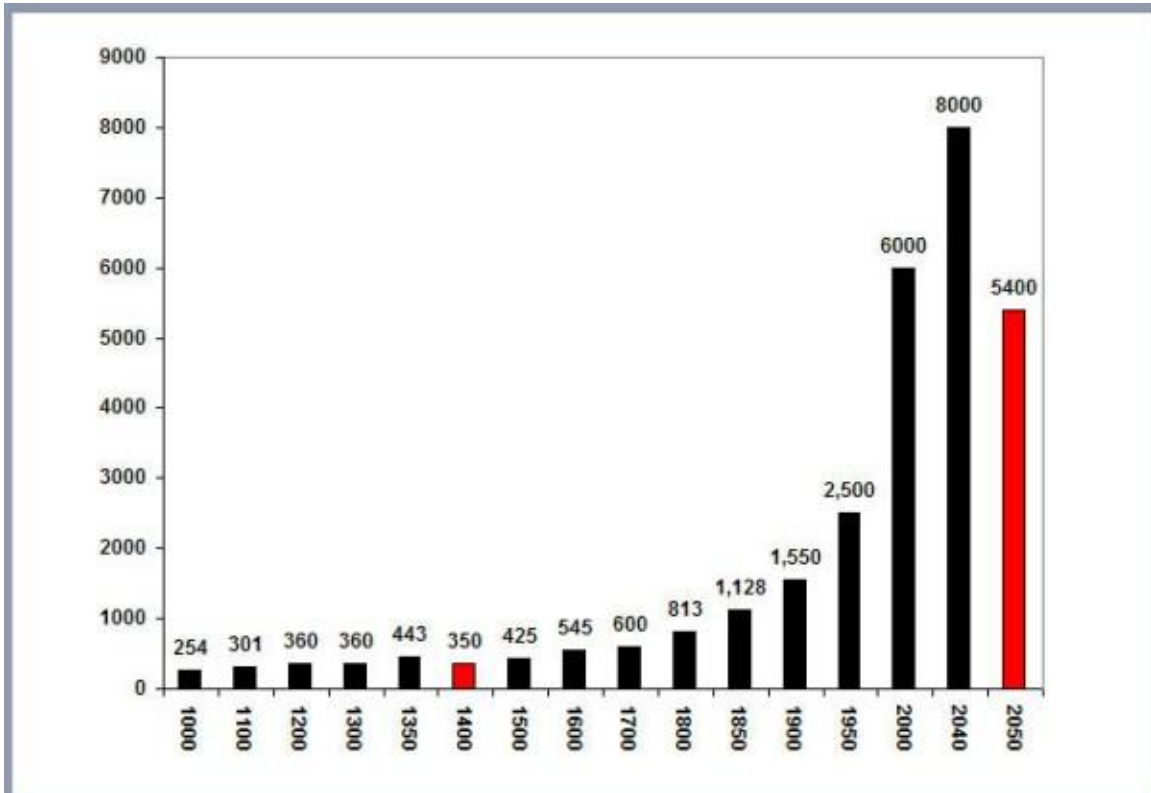
**ARE WE REALLY DRIVING TOWARDS
A GLORIOUS FUTURE THAT LIES SOMEWHERE
BEHIND THE CLOUDS OF FILTH AND
POISON FLOATING IN AIR?**



**TODAY'S POPULATION LEVELS ARE
TOTALLY DISCONNECTED FROM
ENVIRONMENTAL REALITES**



THE FUTURE BEFORE US: A HUMAN DEATH TOLL IN THE BILLIONS?



**THIS COULD BE THE REAL FUTURE
OUR LEADERS ARE CREATING.**

